

Empowering Stewardship: MT PSPP's Collaborative Approach



Janelle Groff
PI Dr. Rachel Malison
October 10, 2025
MT AWRA

Empowering Stewardship: MT PSPP's Collaborative Approach

- ◆ Program Overview

- Flathead Lake Biological Station
- Montana Pesticide Stewardship Partnership Program

- ◆ Program Highlights

- 2023-2025

- ◆ Education and Outreach

- Key Messages
- Goals

- ◆ Future Outlook

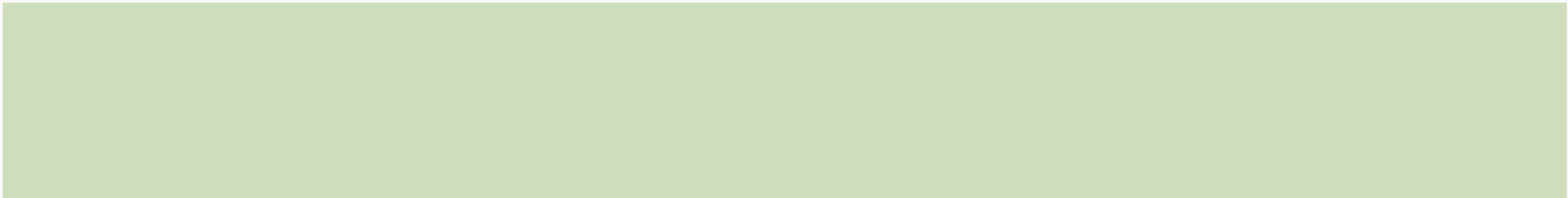




Program Overview

Flathead Lake Biological Station

Montana Pesticide Stewardship Partnership Program

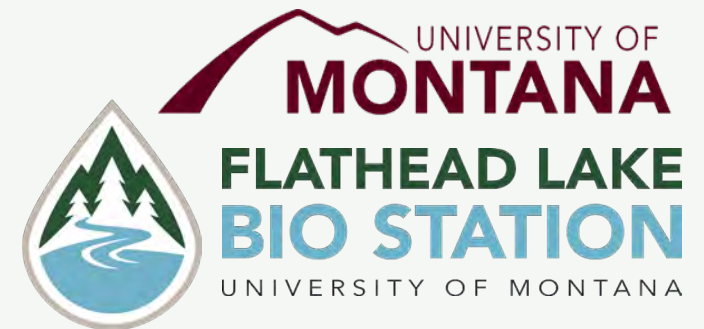


Flathead Lake Biological Station

A hub for aquatic science for over 125 years

We aim to be global leaders aquatic research and education

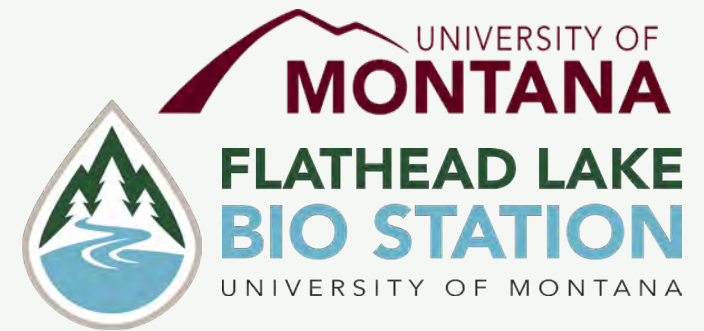
- ◆ inspiring curiosity,
- ◆ deepening understanding of the waters and watersheds around us, and
- ◆ empowering current and future generations to responsibly steward the lakes, rivers, and oceans of the world.



Flathead Lake Biological Station

Our mission is to advance understanding of water and life that depends on it, creating and sharing knowledge locally and globally with

- ◆ students,
- ◆ researchers,
- ◆ decision makers, and
- ◆ our community



Meet the Team



Janelle Groff
Research Coordinator



Dr. Rachel Malison
Assistant Research Professor
PSPP Principal Investigator



Chloe Czachor
Big Sky Watershed Corps
Member

Pesticide Stewardship Partnership Program

- ◆ Awarded in October 2023
- ◆ EPA Columbia River Basin Restoration Program
- ◆ 5-year grant
- ◆ Very little pesticide data in MT waters



Pesticide Stewardship Partnership Program

A collaborative network in Western Montana working to reduce pesticide pollution in our waters through sustainable best practices.

The PSPP supports:

- water quality monitoring,
- community education and engagement,
- and activities to improve water quality.





Pesticide Stewardship Partnership Program

- **GIS + Spatial Data** → Site Selection Framework + Monitoring
- **Monitoring Targets:** Surface water, groundwater, fish tissue, aquatic plants, sediments, macroinvertebrates
- **Program Priorities:**
 - Green Infrastructure
 - Best Practices
 - Education + Outreach
 - Human Health
- **Data Analysis** → Scientific Communication + Outreach

Subaward Recipients:

Montana Department of Agriculture

- ◆ Waste Pesticide Disposal Program
- ◆ Pesticide Container Recycling Program
- ◆ Groundwater Protection Program

Montana Department of Environmental Quality

- ◆ Education + Outreach
- ◆ Native Plants & Buffers

Montana Watershed Coordination Council

- ◆ New Connections/Network Support
- ◆ Education + Outreach

Montana State University Extension

- ◆ Pesticide Leaching/Lysimeter Research
- ◆ Pesticide Education Program

Kootenai Tribe of Idaho

Confederated Salish & Kootenai Tribes

- ◆ Fish Tissue + Food Web Analysis

City of Missoula

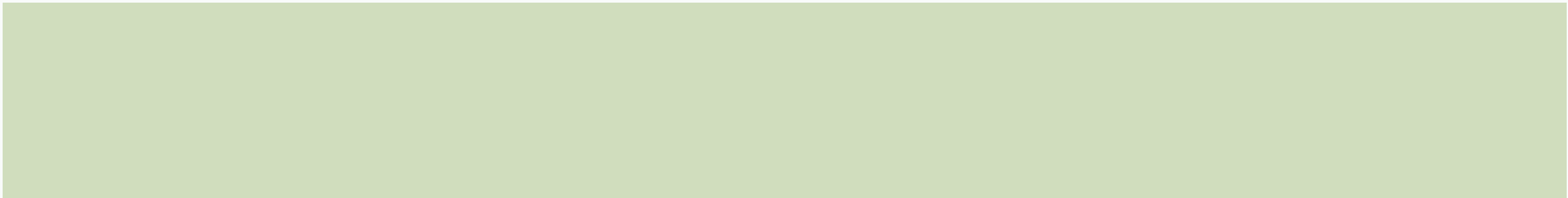
- ◆ Green Stormwater Infrastructure





Program Highlights

2023-2025



2023 & 2024

- ◆ Program development
- ◆ Building partnerships
- ◆ Quality Assurance Project Plan



2023 & 2024

- Program development
- Building partnerships
- Quality Assurance Project Plan



2023 & 2024

- ◆ Program development
- ◆ Building partnerships
- ◆ Quality Assurance Project Plan



QAPP for MT PESP
Revision Number: 1
Revision Date: October 9 2024
Page 1 of 62

Quality Assurance Project Plan

for

**Reducing Toxics in the Upper Columbia River Basin in Montana through
a new Pesticide Stewardship Partnership Program**

Toxic Reduction Lead Grant for the Columbia River Basin Restoration Program
Grant #96888201

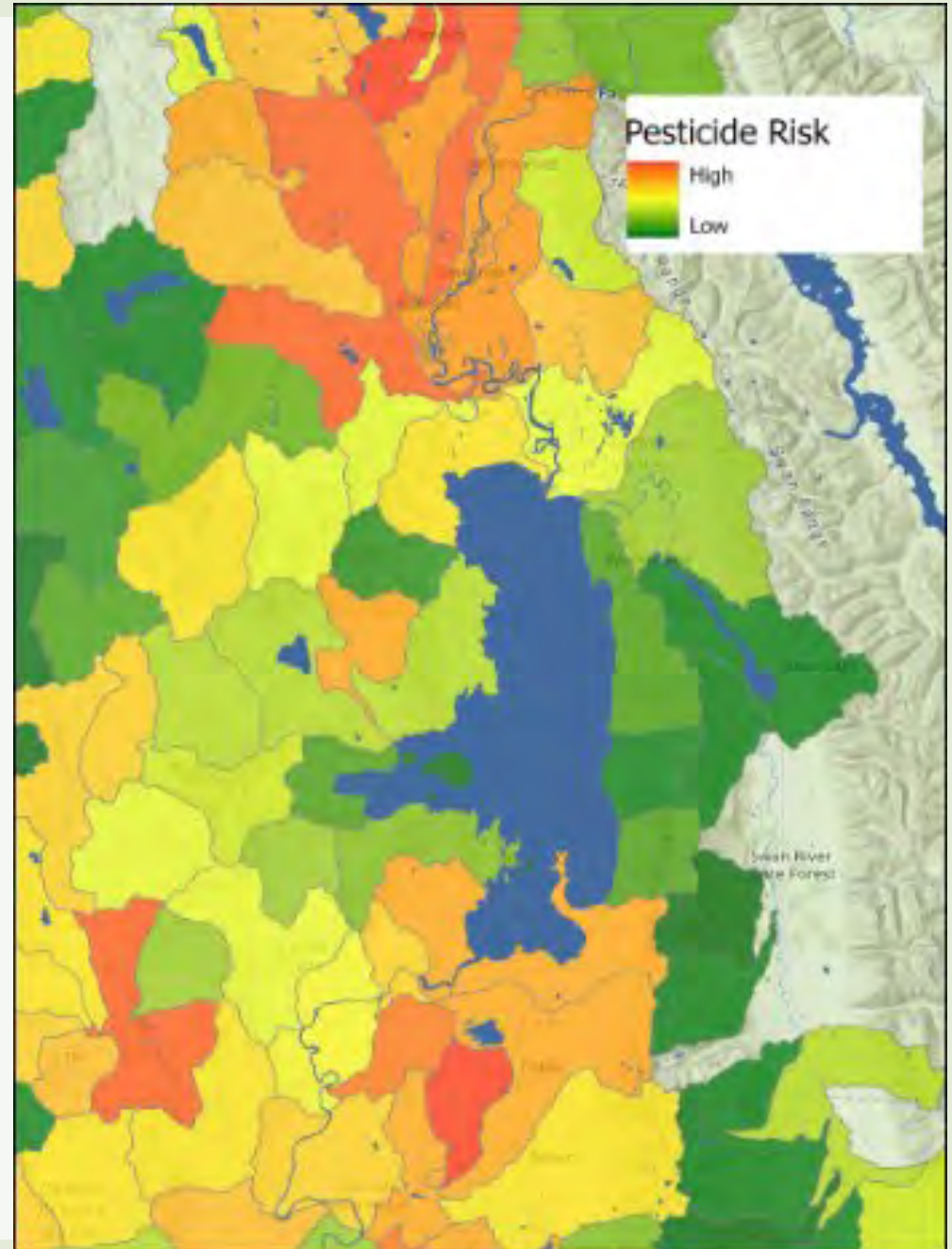
Prepared by:
Jared Glass, Janelle Groff, Rachel Malison, and Diane Whited
University of Montana, Flathead Lake Biological Station
32125 Bio Station Lane
Polson, MT 59860-6815

Original Date: October 9 2024
Revision #1

Prepared for
U.S. EPA Region 8
1595 Wynkoop Street
Denver, CO 80202-1129

2024 & 2025

- ◆ Site selection framework
- ◆ Sample collection began April 2025
- ◆ Development and action in education and outreach



2024 & 2025

- ◆ Site selection framework
- ◆ Sample collection began April 2025
- ◆ Development and action in education and outreach



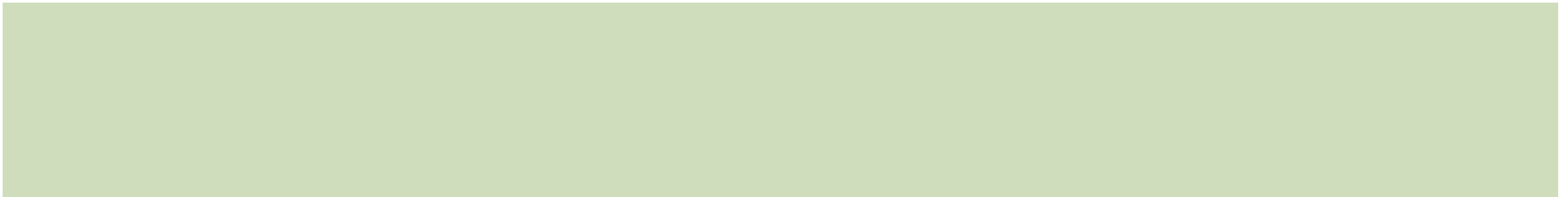


Outreach & Education

Why Messaging Matters

Key Messages

Goals



Pesticide Stewardship Partnership Program

Why Messaging Matters

- Clear, consistent messaging that builds trust and drives voluntary change
- Outreach must resonate with many different audiences
 - Urban & suburban residents
 - Farmers & ranchers
 - Gardeners & foresters
 - Tribal nations & watershed groups
 - Local governments & educators
- Formed the PSPP Education + Outreach Committee
- Pulled on feedback from partners

Pesticide Stewardship Partnership Program
Key Messages for Outreach

- ◆ Pesticides include herbicides, insecticides, fungicides, etc.



Pesticide Stewardship Partnership Program

Key Messages for Outreach

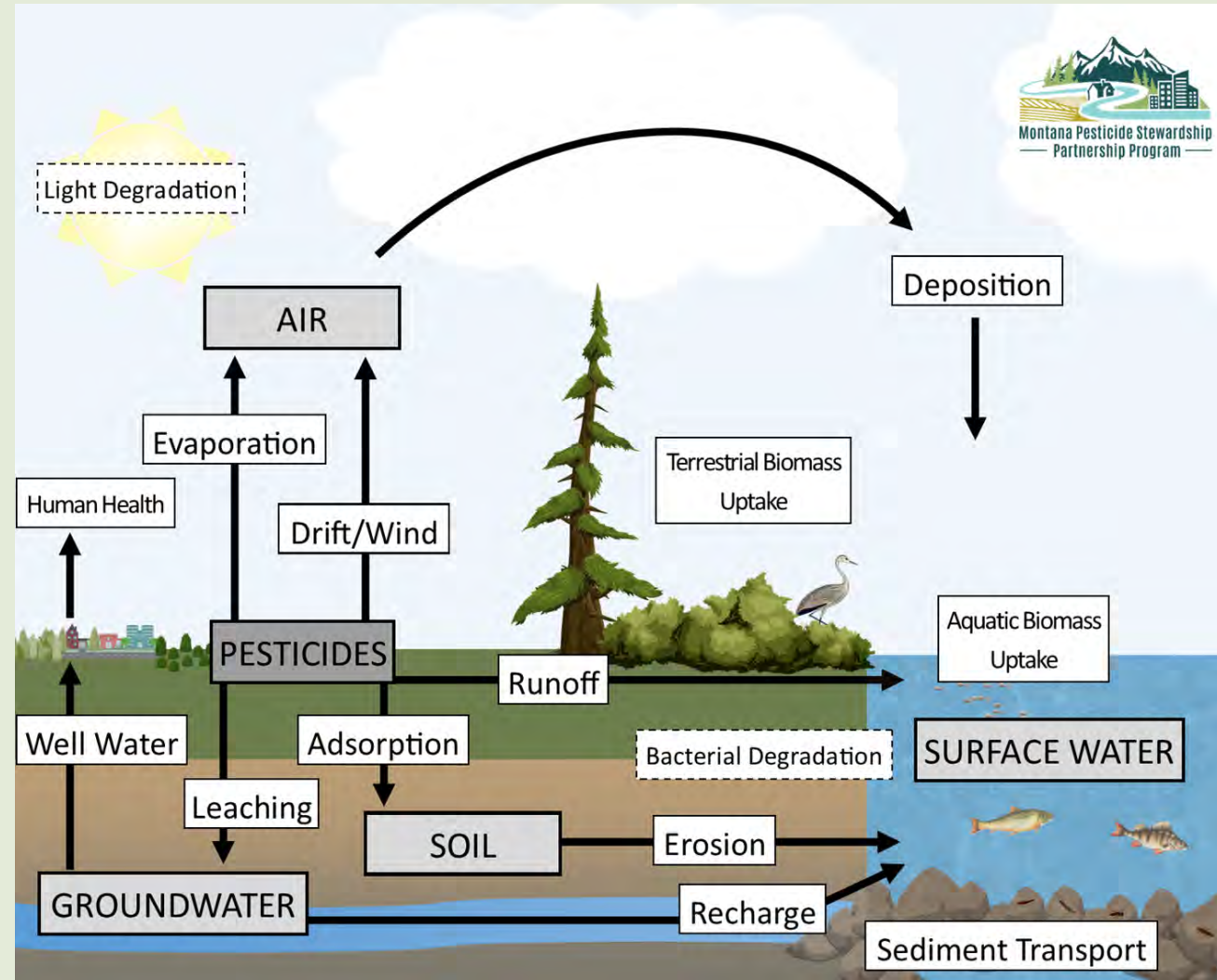
- ◆ Collaborative network of partners including residents, local community partners, government agencies, watershed groups, tribal nations, farmers, and more.



Pesticide Stewardship Partnership Program

Key Messages for Outreach

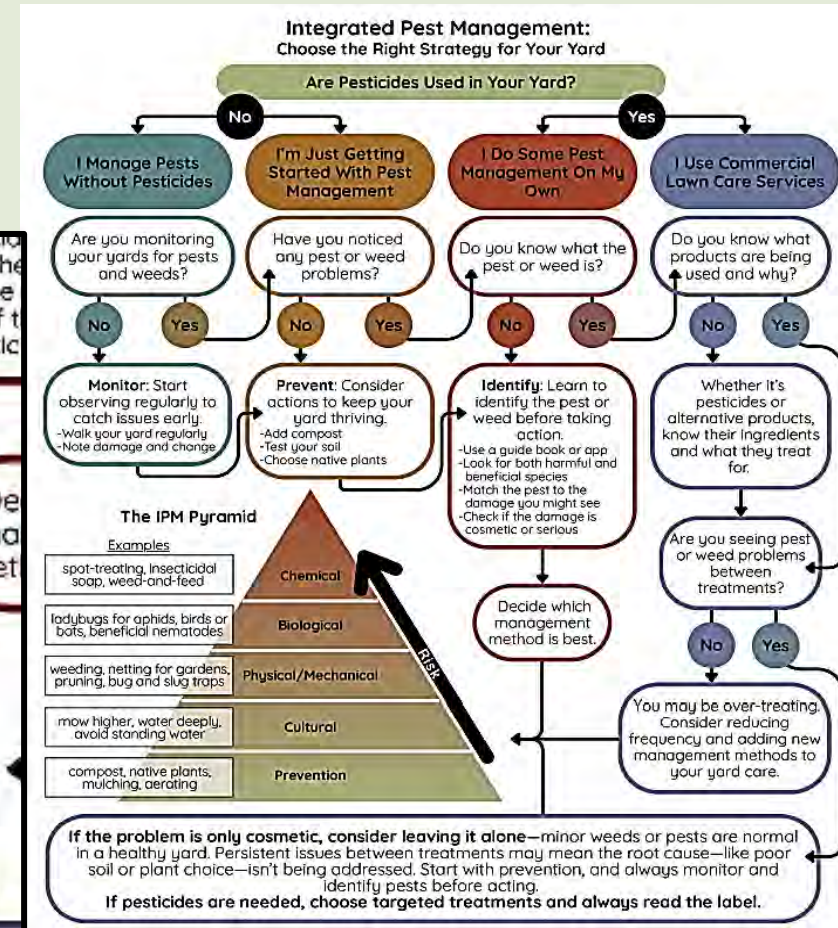
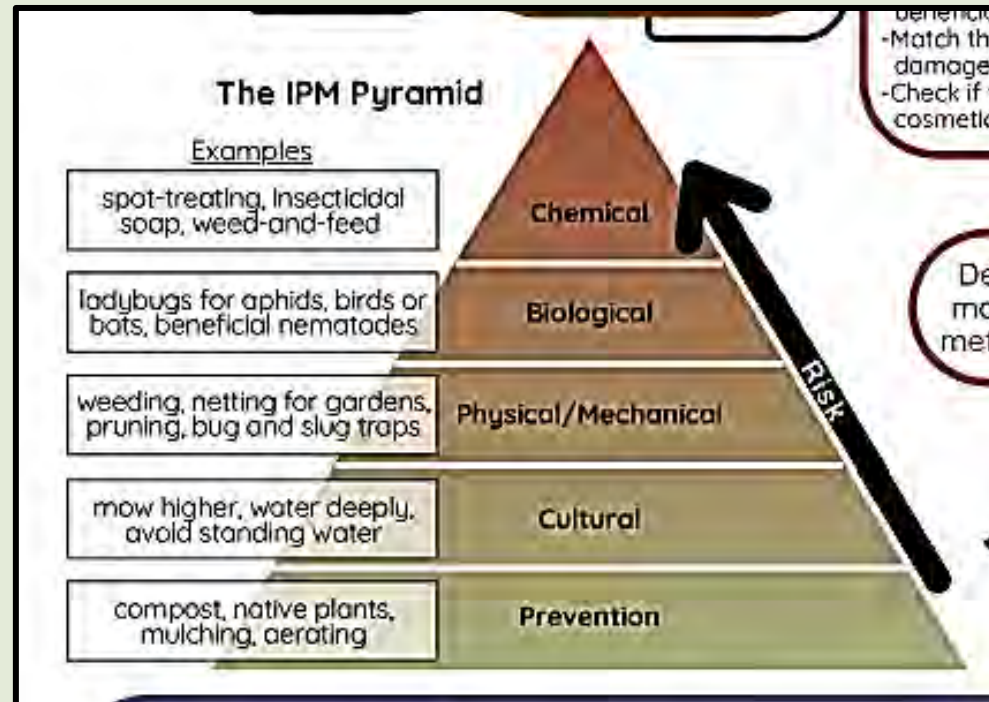
Land water connectivity



Pesticide Stewardship Partnership Program

Key Messages for Outreach

- ♦ Pesticides are ONE tool and there are other tools in the toolbox



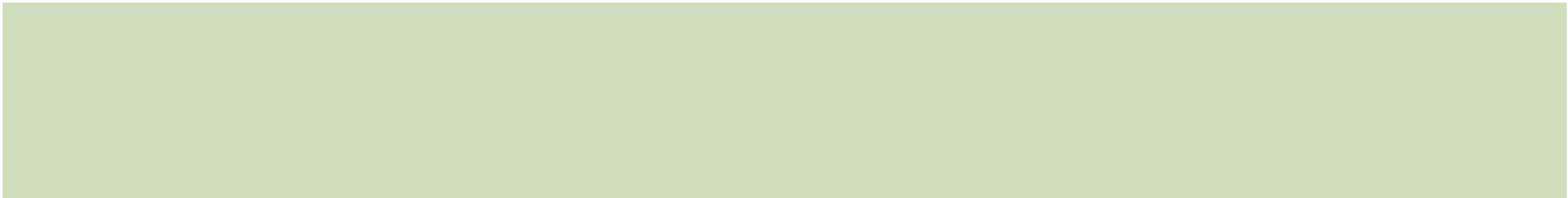
Pesticide Stewardship Partnership Program
Key Messages for Outreach

- ◆ Pesticides include herbicides, insecticides, fungicides, etc.
- ◆ Collaborative network of partners including residents, local community partners, government agencies, watershed groups, tribal nations, farmers, and more.
- ◆ Land water connectivity
- ◆ Pesticides are a tool and there are other tools in the toolbox
- ◆ **A lasting impact on the health and water quality of the upper Columbia River Basin, recognizing that protecting the headwaters will have a continued positive effect downstream. Cumulative voluntary change encouraged by awareness of pesticide impacts, connection between land and water, and other tools for pest management**



Future Outlook

In The Works
Invitation to Collaboration



In The Works

- ◆ Partner Outreach Kits
 - PSPP materials
 - Partner materials
 - PSPP introduction slides
- K-12 Activities
 - Aquatic food web game
 - Classroom kits
 - PestFriends
- ◆ Data Analysis
 - Share interpreted results
 - Support education and outreach
- ◆ Slogan
 - That pairs well with various images that resonate with various audiences
- Resource Pool
 - Central hub for materials
 - Deep dive into alternative strategies and best practices

Invitation to Collaboration

Competitive Contracts

- ◆ Funding to support projects that align with our priorities
 - Best Management Practices
 - Green Infrastructure
 - Education + Outreach

Partner Network

- Monthly Meetings
 - 1st Tuesday of the month at 2:30pm via Teams
- Annual Meeting
 - October 28-30
 - Flathead Lake Biological Station
- Education + Outreach
 - Shared messaging
 - Outreach opportunities
 - Local expertise

Questions?



**FLATHEAD LAKE
BIO STATION**
UNIVERSITY OF MONTANA

Janelle Groff

janelle.groff@flbs.umt.edu

406-872-4508

Dr. Rachel Malison

rachel.malison@flbs.umt.edu

406-972-4518



**Montana Pesticide Stewardship
Partnership Program**

Website:

Newsletter:



MTPSPP@flbs.umt.edu

<https://bit.ly/mtpspp>